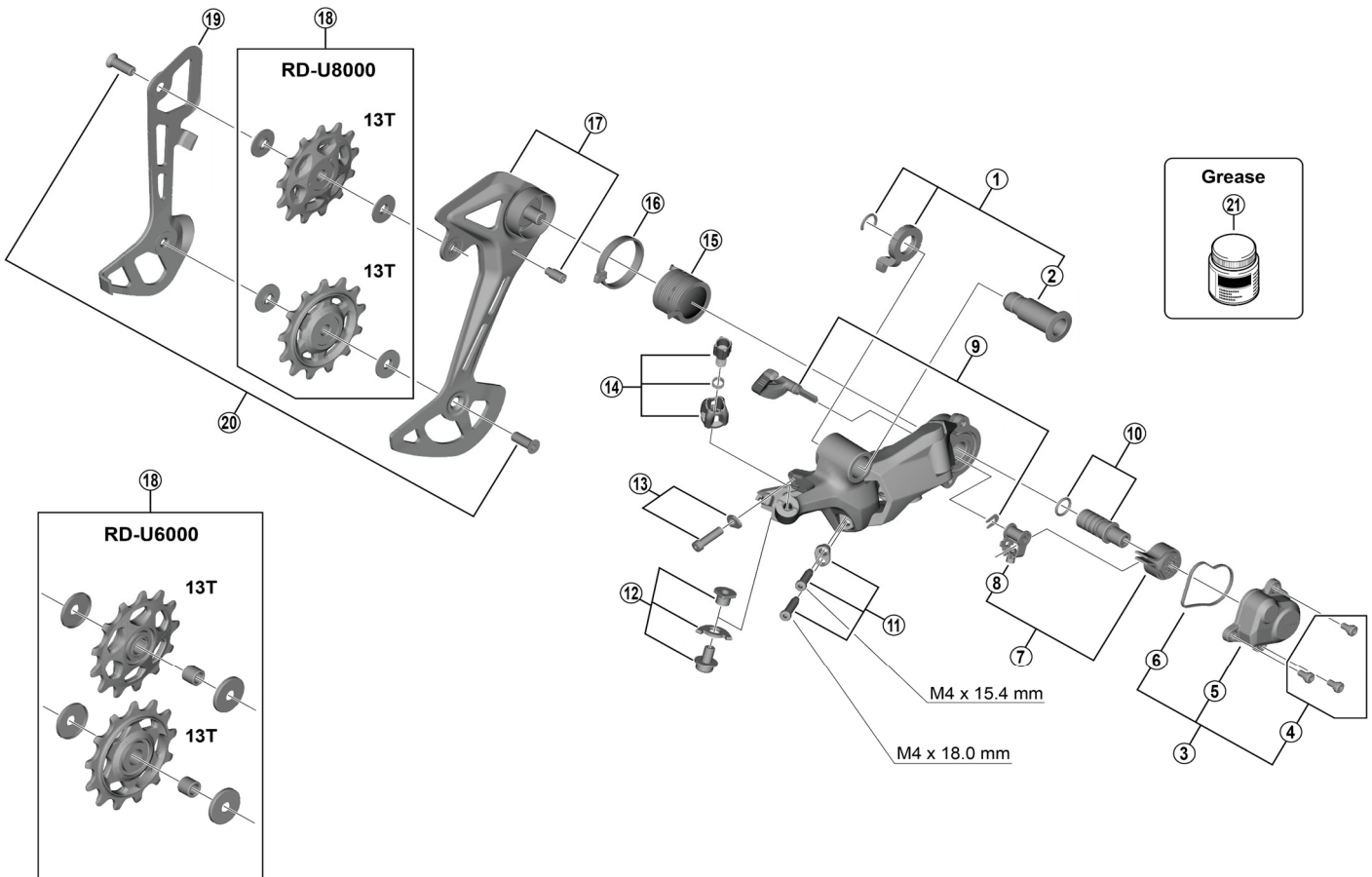


CUES Rear Derailleur
RD-U8000-GS 11-speed
RD-U6000-GS 11/10-speed



ITEM NO.	SHIMANO CODE NO.	DESCRIPTION	INTERCHANGEABILITY		
			RD-U8000	RD-U6000	RD-U4000
1	Y3JD98010	Mounting screw unit (used for RD-U8000)	A	B	B
2	Y3JD9801T	Mounting screw (used for RD-U8000)	A	B	B
3	Y3JD98020	Plate cover unit	A	A	
4	Y5Y198070	Plate unit cover screw set (3 pcs.)	A	A	
5	Y3JD9802T	Plate unit cover	A	A	
6	Y3JD9806T	Plate unit cover gasket	A	A	
7	Y3GF98040	Stabilizer unit	A	A	
8	Y3E498040	Cam unit	A	A	
9	Y3FA98040	Switch lever unit and fixing plate	A	A	
10	Y3HM98120	Plate axle and O-ring	A	A	
11	Y3JD98030	Stroke adjusting screws and plate	A	A	
12	Y3JD98040	Cable fixing bolt unit (used for RD-U8000)	A	B	B
13	Y3JD98050	End adjust screw and plate	A	A	B
14	Y3JD98070	Cable adjustment barrel unit (used for RD-U8000)	A	B	B
15	Y3JD9805T	P-tension spring	A	A	
16	Y3JD9803T	P-seal ring	A	A	
17	Y3JD98060	Outer plate assembly (GS) used for RD-U8000	A	B	
18	Y3JD98080	Tension and guide pulley set for RD-U8000	A	B	B
	Y3JF98010	Tension and guide pulley set for RD-U6000	B	A	A
19	Y3JD9804T	Inner plate (GS) used for RD-U8000	A	B	
20	Y3HM98080	Pulley screw (2 pcs.)	A	A	A
21	Y04121000	Grease for stabilizer (Net. 50 g)	A	A	

A: Same parts.

B: Parts are usable, but differ in materials, appearance, finish, size, etc.

Absence of mark indicates non-interchangeability.

Specifications are subject to change without notice.

Mar.-2023-4962

© Shimano Inc. I

SHIMANO