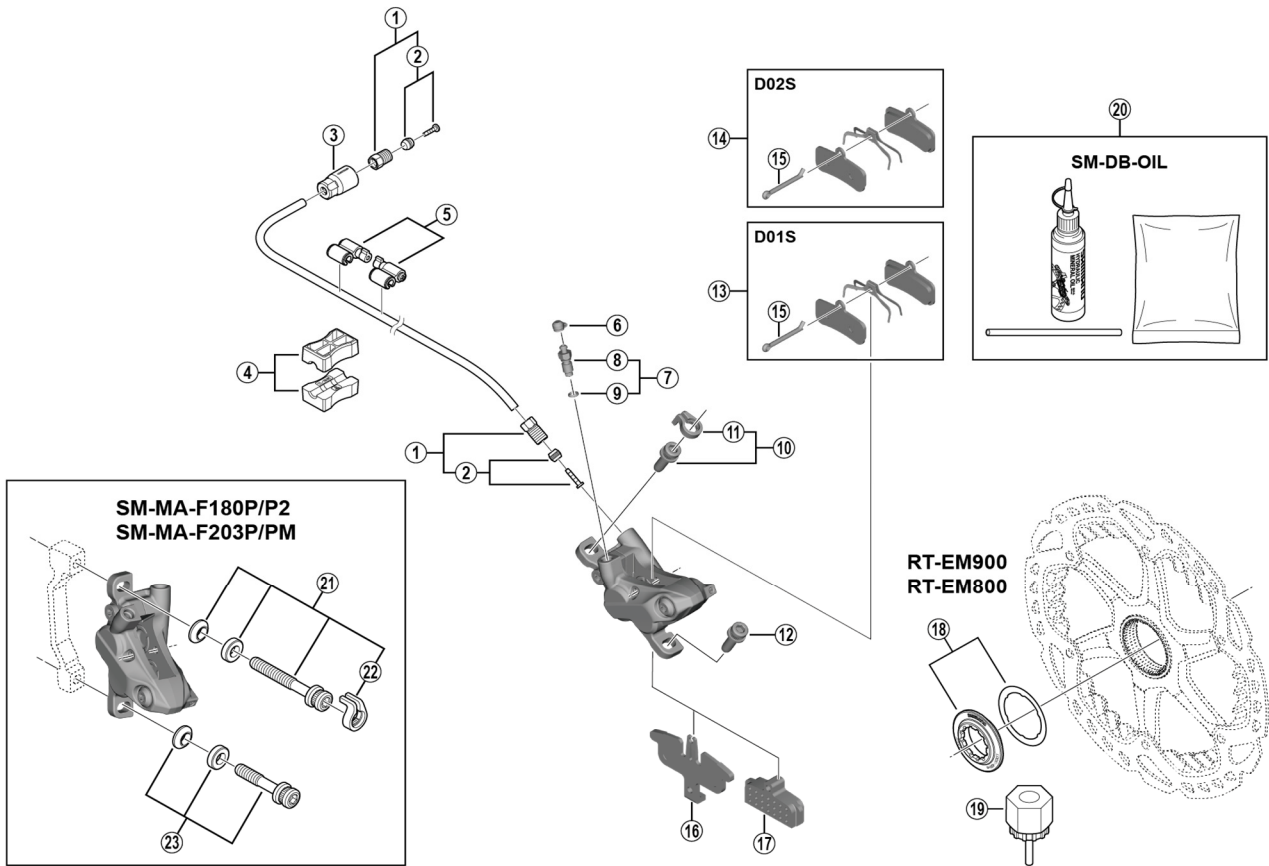


Disc Brake

**BR-MT520** Brake Caliper

**SM-BH90-SS** Brake Hose

**RT-EM900/RT-EM800** Disc Rotor



ITEM NO.	SHIMANO CODE NO.	DESCRIPTION
1	Y8KH98010	Connecting Bolt Unit
2	Y8JA98020	Olive & Connector Insert
3	Y8WM14000	Cover
4	Y8H198030	TL-BH61 Special Tool (2 pcs.)
5	Y83098040	SM-HANG Hose Supporter A & B
6	Y8B214000	Bleed Nipple Cap
7	Y8ES98020	Bleed Nipple & Seal Ring
8	Y8CL24100	Bleed Nipple
9	Y8B511000	O-Ring for Bleed Nipple
10	Y8DS98010	Caliper Fixing Bolt (M6 x 18.7) & Snap Ring
11	Y8C511000	Snap Ring
12	Y8C509020	Caliper Fixing Bolt (M6 x 18.7)
13	Y8FF98020	Resin Pad (D01S) & Spring w/Split Pin
14	Y8FF98010	Metal Pad (D02S) & Spring w/Split Pin
15	Y8DB06100	Split Pin
16	Y1Y003000	Pad Spacer
17	Y8FF19000	Bleeding Spacer
18	Y8K198010	Lock Ring & Washer
19	Y12009230	TL-LR15 Lock Ring Removal Tool
20	Y83998010	Mineral Oil Bleed Kit (50 ml)
21	Y8G498020	Caliper Fixing Bolt Unit (M6 x 37.9) for SM-MA-F180P/P2
22	Y8J498010	Caliper Fixing Bolt Unit (M6 x 40.2) for SM-MA-F203P/PM
23	Y81703000	Snap Ring
	Y8G498030	Caliper Fixing Bolt Unit (M6 x 32.1) for SM-MA-F180P/P2
	Y8J498020	Caliper Fixing Bolt Unit (M6 x 34.4) for SM-MA-F203P/PM

Apr.-2018-4352  
© Shimano Inc. I

Specifications are subject to change without notice.

**SHIMANO**