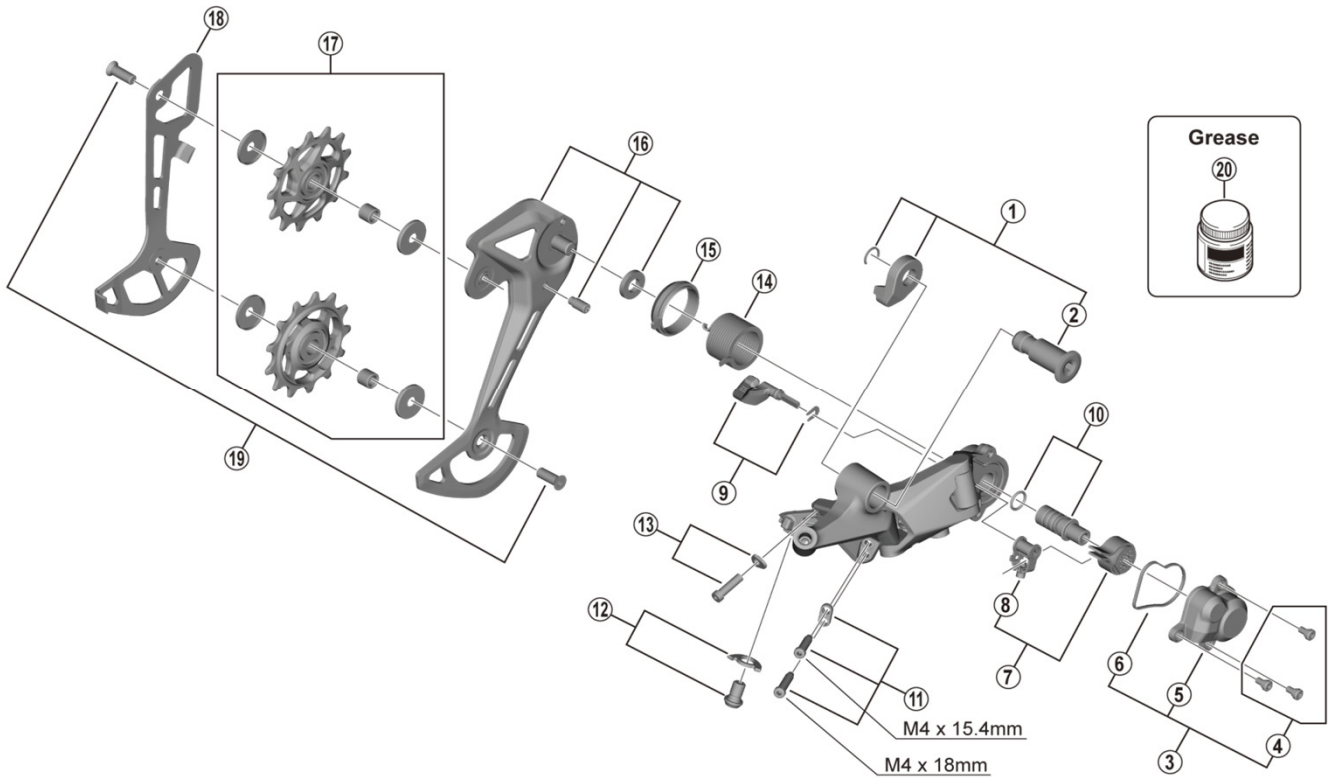


DEORE Rear Derailleur

RD-M6100-SGS 12-speed



ITEM NO.	SHIMANO CODE NO.	DESCRIPTION	INTERCHANGEABILITY	
1	Y3HK98010	Bracket Axle Unit	B	
2	Y3HK42000	B-Axle	B	
3	Y3HK98020	P-Cover Unit	B	
4	Y5Y198070	P-Cover Screw Set (3 pcs.)	A	
5	Y3HK43000	P-Cover	B	
6	Y3FA63000	P-Cover Packing	A	
7	Y3GF98040	Stabilizer Unit	A	
8	Y3E498040	Cam Unit	A	
9	Y3FA98040	Switch Lever Unit & Fixing Plate	A	
10	Y5PV98060	P-Axle & O-Ring	A	
11	Y3FW98050	Stroke Adjusting Screws & Plate	A	
12	Y3FW98060	Cable Fixing Screw & Plate	A	
13	Y3FW98070	End Adjust Screw (M4 x 14.1) & Plate	A	
14	Y3FA55000	P-Tension Spring	A	
15	Y3FA62000	P-Seal Ring	A	
16	Y3HK98030	Outer Plate Assembly (SGS)	B	
17	Y3FY98010	Tension & Guide Pulley Set	A	
18	Y3HK26000	Inner Plate (SGS)	B	
19	Y5V598140	Pulley Screw 12.5 mm (2 pcs.)	A	
20	Y04121000	New Grease for Stabilizer (Net. 50g)	A	

A: Same parts.

B: Parts are usable, but differ in materials, appearance, finish, size, etc.

Absence of mark indicates non-interchangeability.

Specifications are subject to change without notice.

May-2020-4677

© Shimano Inc. I

SHIMANO