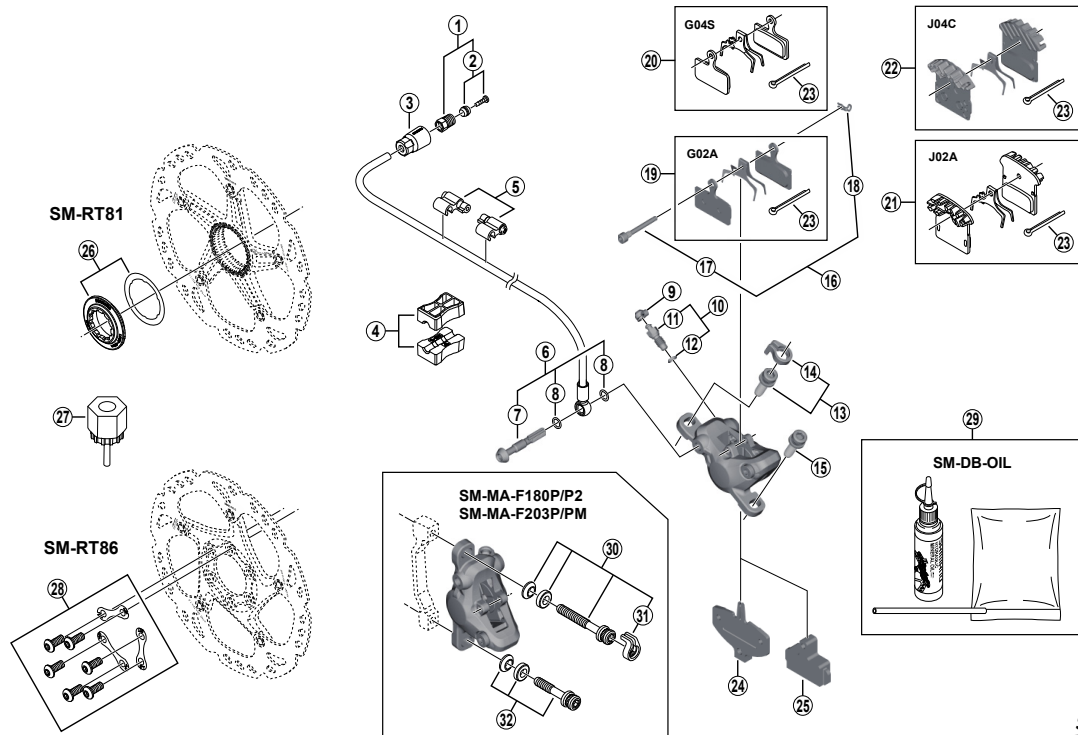


DEORE XT Disc Brake
BR-M8000 Brake Caliper
SM-BH90-SB Brake Hose

SM-RT81 Disc Rotor/Center Lock
SM-RT86 Disc Rotor/6-Bolt



BR-M9020
 BR-M785

| ITEM NO. | SHIMANO CODE NO. | DESCRIPTION | INTERCHANGEABILITY | |
|----------|------------------|---|--------------------|---|
| | | | | |
| 1 | Y8JA98010 | Connecting Bolt Unit | A | A |
| 2 | Y8JA98020 | Olive & Connector Insert | A | A |
| 3 | Y8JA07000 | Cover | A | B |
| 4 | Y8H198030 | TL-BH61 Shimano original tool (2 pcs.) | A | A |
| 5 | Y83098040 | SM-HANG Hose Supporter A & B | A | A |
| 6 | Y8JA98030 | Banjo Bolt & O-Ring | B | A |
| 7 | Y8JA04000 | Banjo Bolt | B | A |
| 8 | Y8SY28000 | O-Ring | A | A |
| 9 | Y8B214000 | Bleed Nipple Cap | A | A |
| 10 | Y8CL98050 | Bleed Nipple & Seal Ring | A | A |
| * | Y8CL24200 | Bleed Nipple | A | A |
| 12 | Y8B511001 | O-Ring for Bleed Nipple | A | A |
| 13 | Y8DS98010 | Caliper Fixing Bolt (M6 x 18.7) & Snap Ring | B | A |
| 14 | Y8C511000 | Snap Ring | B | A |
| 15 | Y8C509020 | Caliper Fixing Bolt (M6 x 18.7) | B | A |
| 16 | Y8JZ98010 | Pad Axle & Snap Retainer | B | A |
| 17 | Y8JZ05000 | Pad Axle | B | A |
| 18 | Y8J716000 | Snap Retainer | A | A |
| 19 | Y8LW98020 | Resin Pad (G02A) & Spring w/Split Pin | A | B |
| 20 | Y8MY98010 | Metal Pad (G04S) & Spring w/Split Pin | B | B |
| 21 | Y8LW98040 | Resin Pad (J02A) w/Fin & Spring w/Split Pin | A | B |
| 22 | Y8LW98030 | Metal Pad (J04C) w/Fin & Spring w/Split Pin | A | B |
| 23 | Y8DB06100 | Split Pin | B | B |
| 24 | Y8J709000 | Pad Spacer | A | A |
| 25 | Y8J712000 | Bleeding Spacer | A | A |
| 26 | Y8K198010 | Lock Ring & Washer | A | A |
| 27 | Y12009230 | TL-LR15 Lock Ring Removal Tool | A | A |
| 28 | Y8J298030 | Rotor Fixing Bolt & Lock Washer | A | A |
| 29 | Y83998010 | Mineral Oil Bleed Kit (50 ml) | A | A |
| 30 | Y8G498020 | Caliper Fixing Bolt Unit (M6 x 37.9) for SM-MA-F180P/P2 | B | A |
| | Y8J498010 | Caliper Fixing Bolt Unit (M6 x 40.2) for SM-MA-F203P/PM | | |
| 31 | Y81703000 | Snap Ring | B | A |
| 32 | Y8G498030 | Caliper Fixing Bolt Unit (M6 x 32.1) for SM-MA-F180P/P2 | B | A |
| | Y8J498020 | Caliper Fixing Bolt Unit (M6 x 34.4) for SM-MA-F203P/PM | B | A |

A: Same parts.

B: Parts are usable, but differ in materials, appearance, finish, size, etc.

Absence of mark indicates non-interchangeability.

Specifications are subject to change without notice.

Apr.-2016-3857B

© Shimano Inc. I

SHIMANO